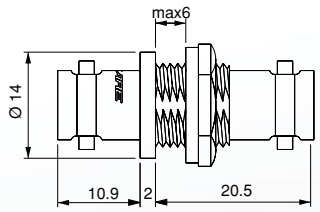
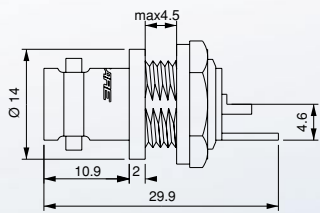


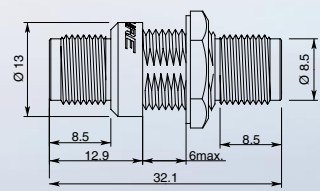
## Stand-off Bulkhead Receptacles



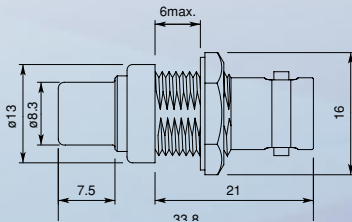
**BCJ-JR**



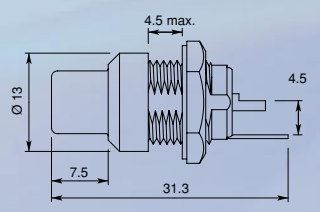
**BCJ-R/1**



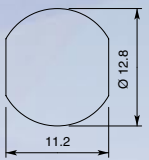
**FJ-JR**



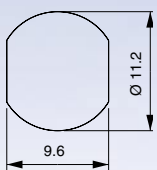
**RJ-BCJR**



**RJ-R**



**Punch Hole Dimensions**  
(if NOT using  
IU-7/16 Iso Bushing)



**Punch Hole Dimensions**  
(if USING IU-7/16  
Iso Bushing)

## Stand-off Bulkhead Receptacles (Loaded)

### Applications

- Headends
- Multimedia edit suites
- Master control rooms
- Satellite
- Telcom
- Broadband

### Features

1. Isolated BNC, RCA, F, XLR on same panel
2. 16 gauge cold rolled steel panel
3. Top & bottom panel reinforcement folds

### Benefits

1. Flexible, customizable layout
2. Strong; impact and torsion resistant
3. Extra support to prevent bending and sagging



## Stand-off Bulkhead Panels (Unloaded)

### Applications

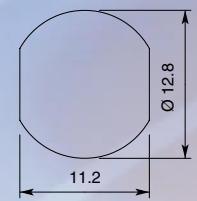
- Headends
- Multimedia edit suites
- Master control rooms
- Satellite
- Telcom
- Broadband

### Features

1. Black powder-coated metal
2. Double D size for isolation bushings

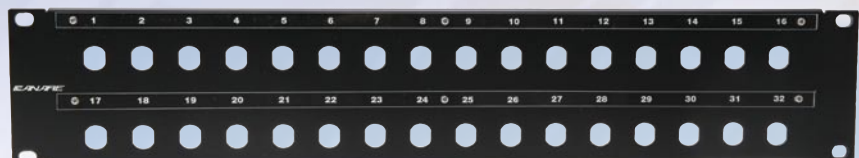
### Benefits

1. Strong and scratch resistant
2. Each connector individually isolated from panel



**16U-DD**

16 jack holes, 1RU, 0.35 inch pre-printed designation strip



**32U-DD**

32 jack holes, 2RU, 0.35 inch pre-printed designation strip